



## ANNIVERSARY 16763S



### ANNIVERSARY 16763S

Model number: 31ANN16763SH19

**3 beds • 2 baths • 1216 sq.ft. • 16' width • 76' depth**

Our home building facilities invest in continuous product and process improvements. Plans, dimensions, features, materials, specifications and availability are subject to change without notice or obligation. Renderings and floor plans are representative likenesses of our homes and may differ from the actual homes. We invite you to tour a Home Center near you and inspect the highest value in quality housing available or call (936) 756-2900 to speak with a Home Consultant. Copyright 2017, CMH. All rights reserved.

<https://www.claytonconroe.com>

### CLAYTON HOMES- CONROE

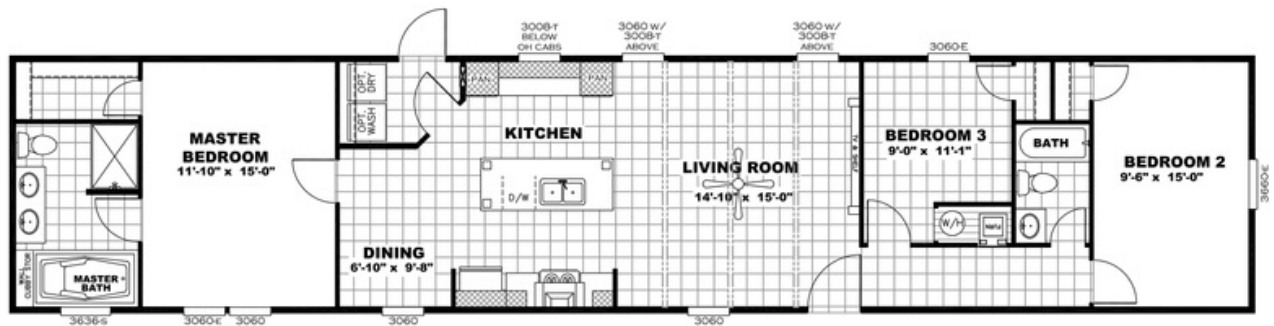
3500 N LOOP 336E  
CONROE, TX 77301

Monday - Thursday: 9am to 6pm  
Friday: 9am to 6pm  
Saturday: 9am to 5pm  
Sunday: Closed

(936) 756-2900



# ANNIVERSARY 16763S



MODEL# ANN16763SH

DRAWING # 31-76S-TXANN

\*\*\*ALL WINDOWS ARE THERMAL PANE\*\*\*

## ANNIVERSARY 16763S

Model number: 31ANN16763SH19

**3 beds • 2 baths • 1216 sq.ft. • 16' width • 76' depth**

Our home building facilities invest in continuous product and process improvements. Plans, dimensions, features, materials, specifications and availability are subject to change without notice or obligation. Renderings and floor plans are representative likenesses of our homes and may differ from the actual homes. We invite you to tour a Home Center near you and inspect the highest value in quality housing available or call (936) 756-2900 to speak with a Home Consultant. Copyright 2017, CMH. All rights reserved.

<https://www.claytonconroe.com>

### CLAYTON HOMES- CONROE

3500 N LOOP 336E  
CONROE, TX 77301

Monday - Thursday: 9am to 6pm  
Friday: 9am to 6pm  
Saturday: 9am to 5pm  
Sunday: Closed

(936) 756-2900